

LIOLI
ESTHETIC MARMORÉAL

BY

 caesarstone®

P R O J E C T



COMMERCIAL PROJECT



The hotel's design was inspired by the rich cultural heritage of **Bhubaneswar**, while also incorporating contemporary elements to appeal to discerning travelers. Central to achieving this vision was the careful selection of materials that would enhance the aesthetic and practical aspects of the space. The combination of these exquisite tiles

transformed the hotel into a masterpiece of modern design. Each area, from the grand lobby to the intimate guest rooms, showcased the perfect blend of form and function, offering a luxurious experience for every guest.



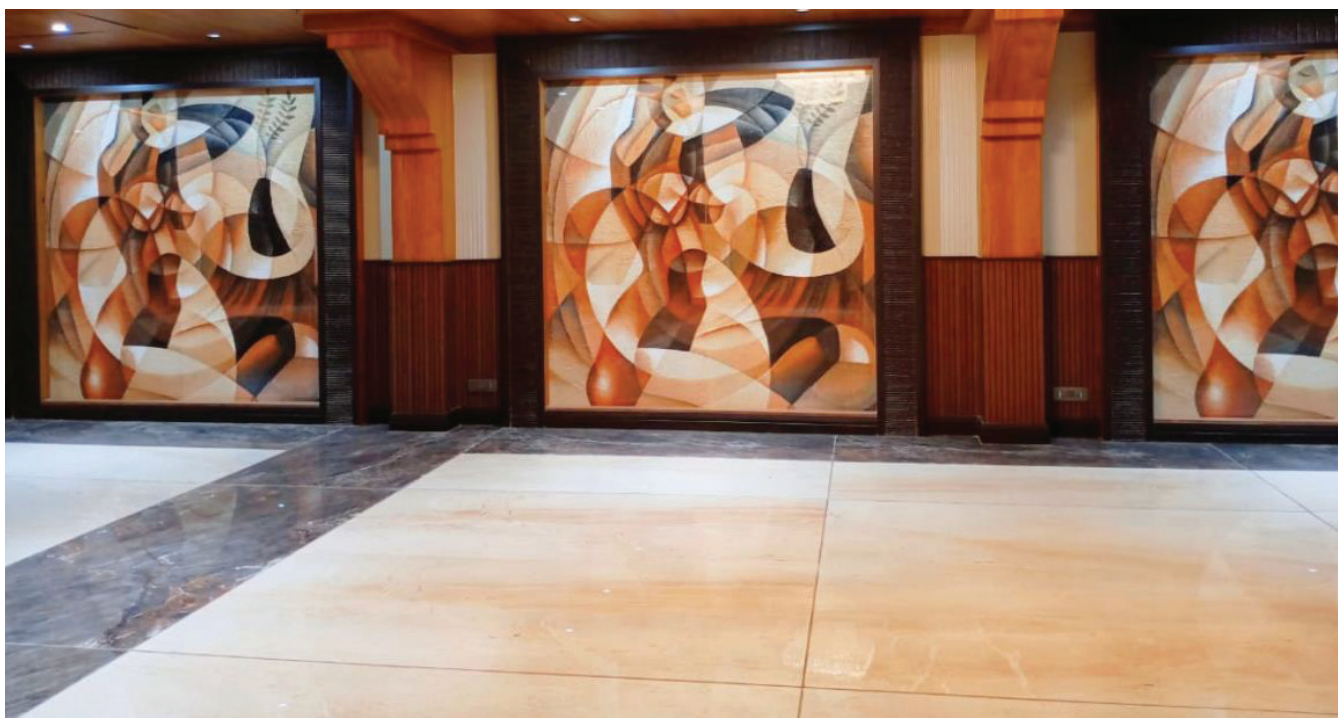
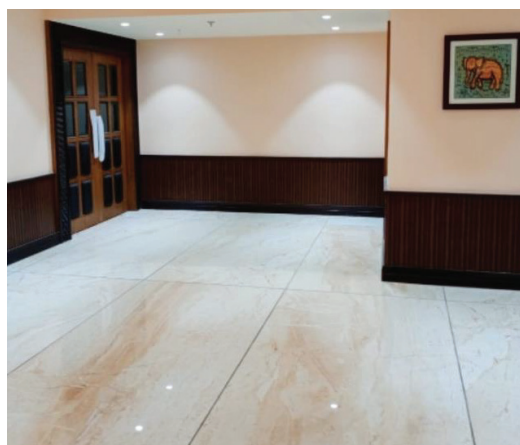
DESIGN AND SIZE



ABSTRATO MODA : 1200 X 2400 MM / LUSTROUS / BOOKMATCH

DYNA CLASSIC : 1600 X 1600 MM & 1200 X 2400 MM / CRYSTALLINE

IRISH BROWN : 1200 X 2400 MM / CRYSTALLINE



LIOLI
ESTHETIC MARMORÉAL

BY

 caesarstone®